



PURPOSE BUILT COMMUNITIES

**GULFTON / SHARPSTOWN**

connect  
community



# OUR STRENGTH, OUR FUTURE

# Density falls between Chicago and NYC

**18,000+**  
Residents In Study Area

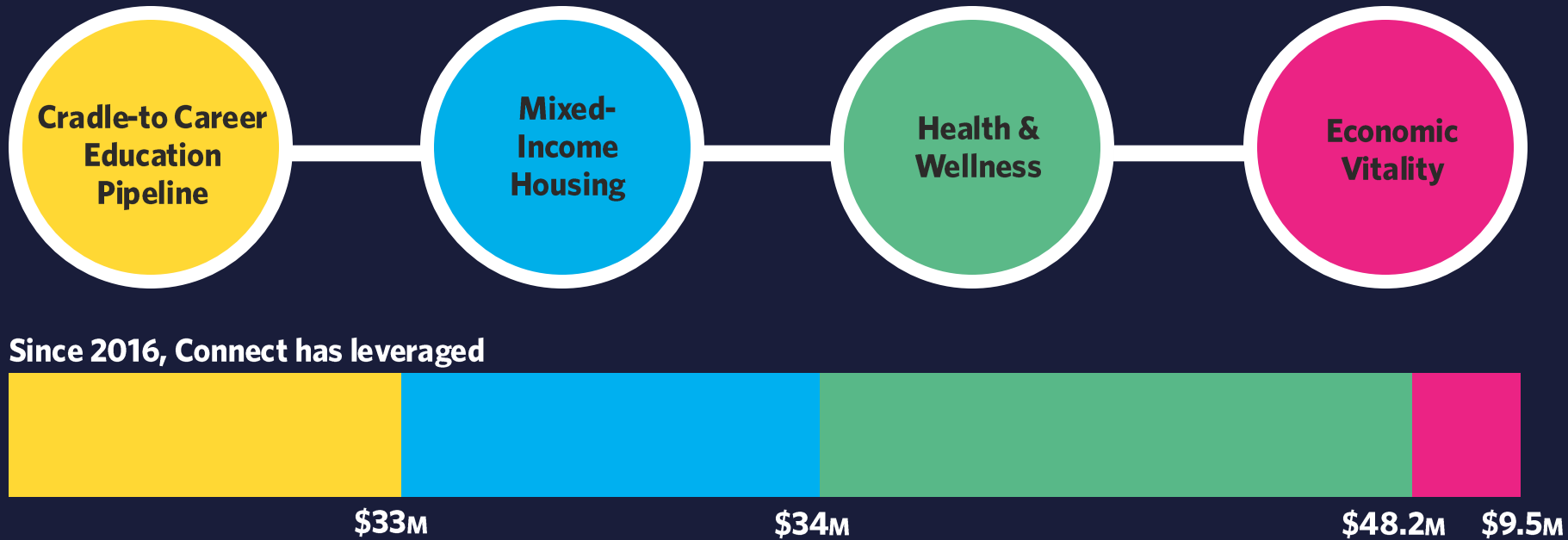
**53,800+**  
Gulfton Residents



**Over 50+**  
Languages Spoken

**We want to leverage the  
neighborhood's density and  
partner with residents to build  
a resilient future**

# connect community



With an annual operating  
budget of just \$500,000,  
Connect has

connect  
community

**+\$124** Million  
**raised since 2016**

**+85★**  
**Partnerships**



How do we  
elevate the  
great work  
happening in  
Gulfton ?



# GULFTON INNOVATION

**Total adults (18+): 12,726**

**Education levels (18+):**

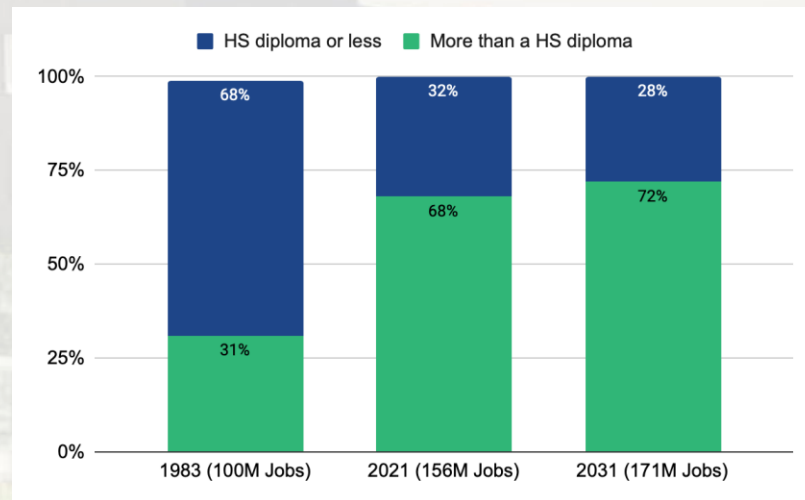
- Some HS or less: 4,718
- HS diploma only: 2,874
- GED/alternative: 252
- **Percentage stopping at or before HS/GED: 62%**

According to Georgetown U's College Payoff research earning an Associate's degree - as a proxy for postsecondary education - significantly increases lifetime earnings:

- HS diploma/GED vs. Associate's: +\$400
- Less than HS diploma vs. Associate's: +\$800K

**If all adults in the neighborhood attained an Associate's, the total potential additional lifetime earnings would be \$5 billion.**

**62% of adults in the neighborhood stop learning at or before high school, despite 72% of future jobs requiring postsecondary education**

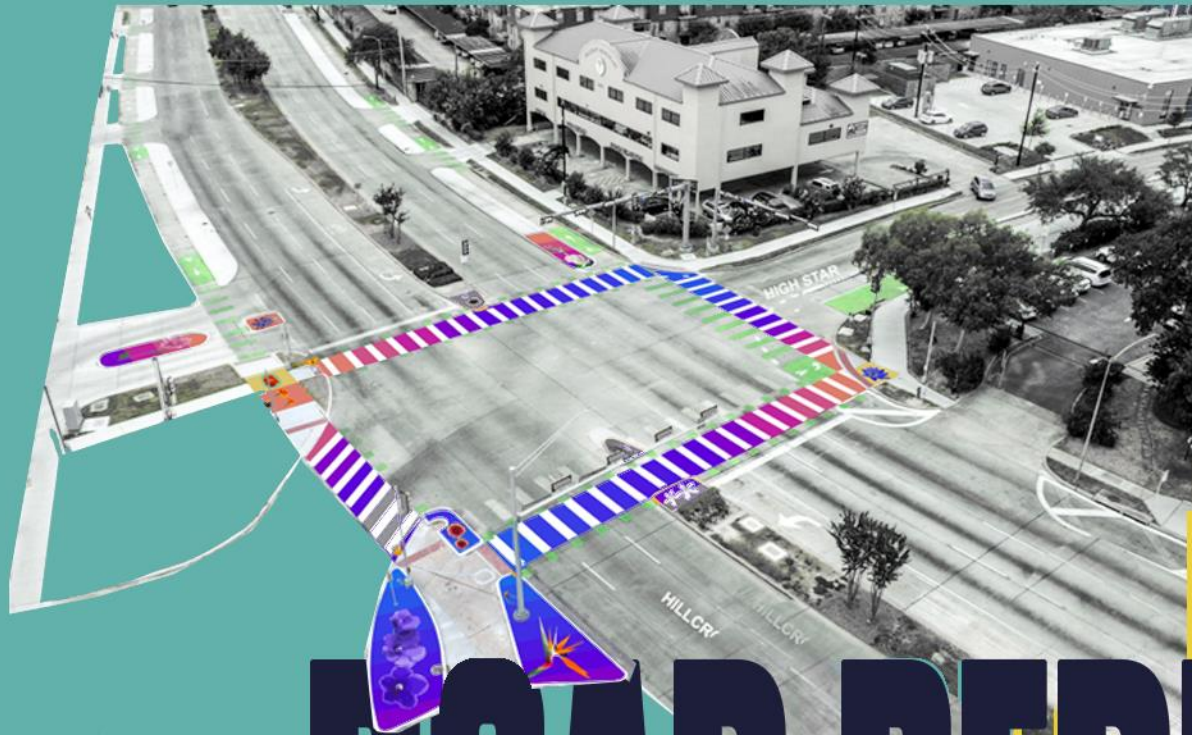






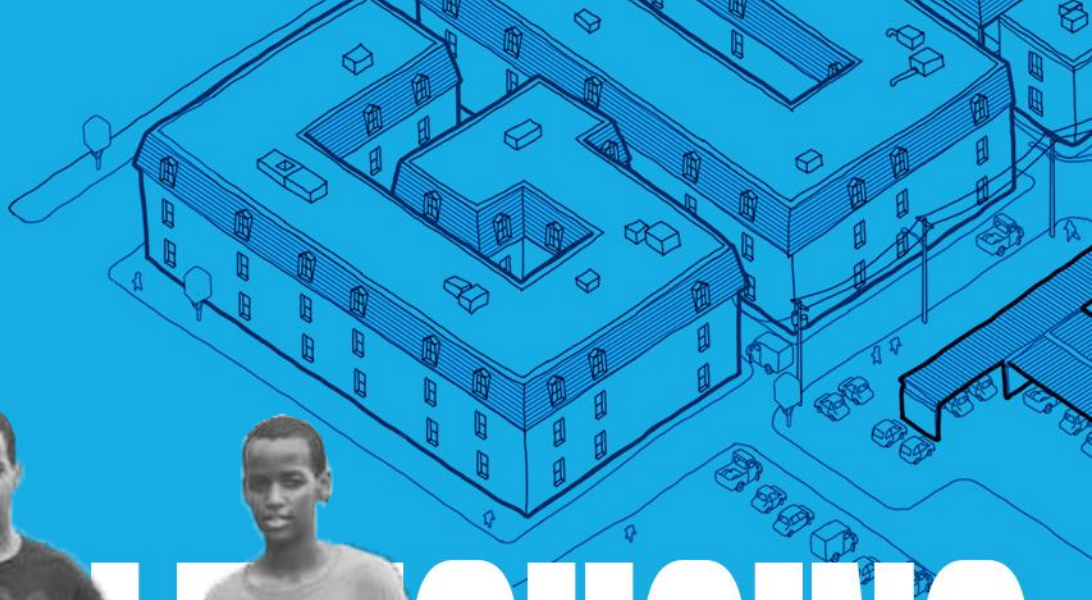
**"We live in your neighborhood and help you navigate the basics like setting up a bank account, finding a doctor or getting your child into the right school."**

# HEALTH & WELLNESS



# ROAD REDESIGN

**"As a mother of four boys,  
Tayiba works hard every  
day trying to create a safe  
and happy space for her  
family to live."**

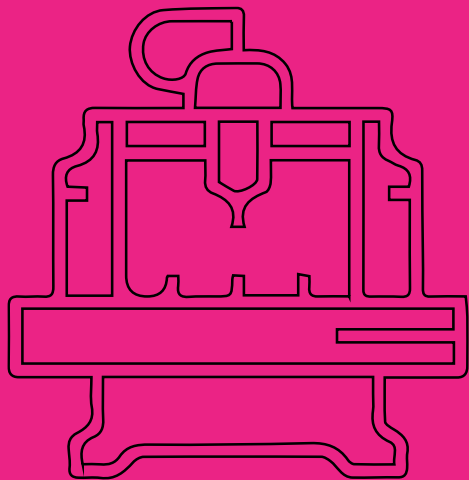


# AFFORDABLE HOUSING

Four young boys of African descent are standing in front of the large white text 'AFFORDABLE HOUSING'. From left to right: a young boy in a grey long-sleeved shirt and grey pants; a taller boy in a dark t-shirt with a graphic and dark pants; a boy in a light grey t-shirt with 'HOUSTON CRUISE' text and dark pants; and a small boy in a dark t-shirt with a graphic and dark pants. They are all looking towards the camera.







**"I hope to have my own line of clothes in the future. For 2022, I want to improve my English so I can become an entrepreneur!"**



# HTX SEWING GOODS

# HTX SEWN GOODS

made locally by global talent

AN INITIATIVE OF CONNECT COMMUNITY



PURPOSE BUILT COMMUNITIES

**GULFTON / SHARPSTOWN**



**15**  
**SINGLE NEEDLE  
FLATBEDS**




**4**  
**COVER STITCH**



**5**  
**OVER LOCK**



**2**  
**WALKING FOOT**



**2**  
**FLAT SEAM**




**1**  
**ZIG ZAG**



**1**  
**EMBROIDERY**

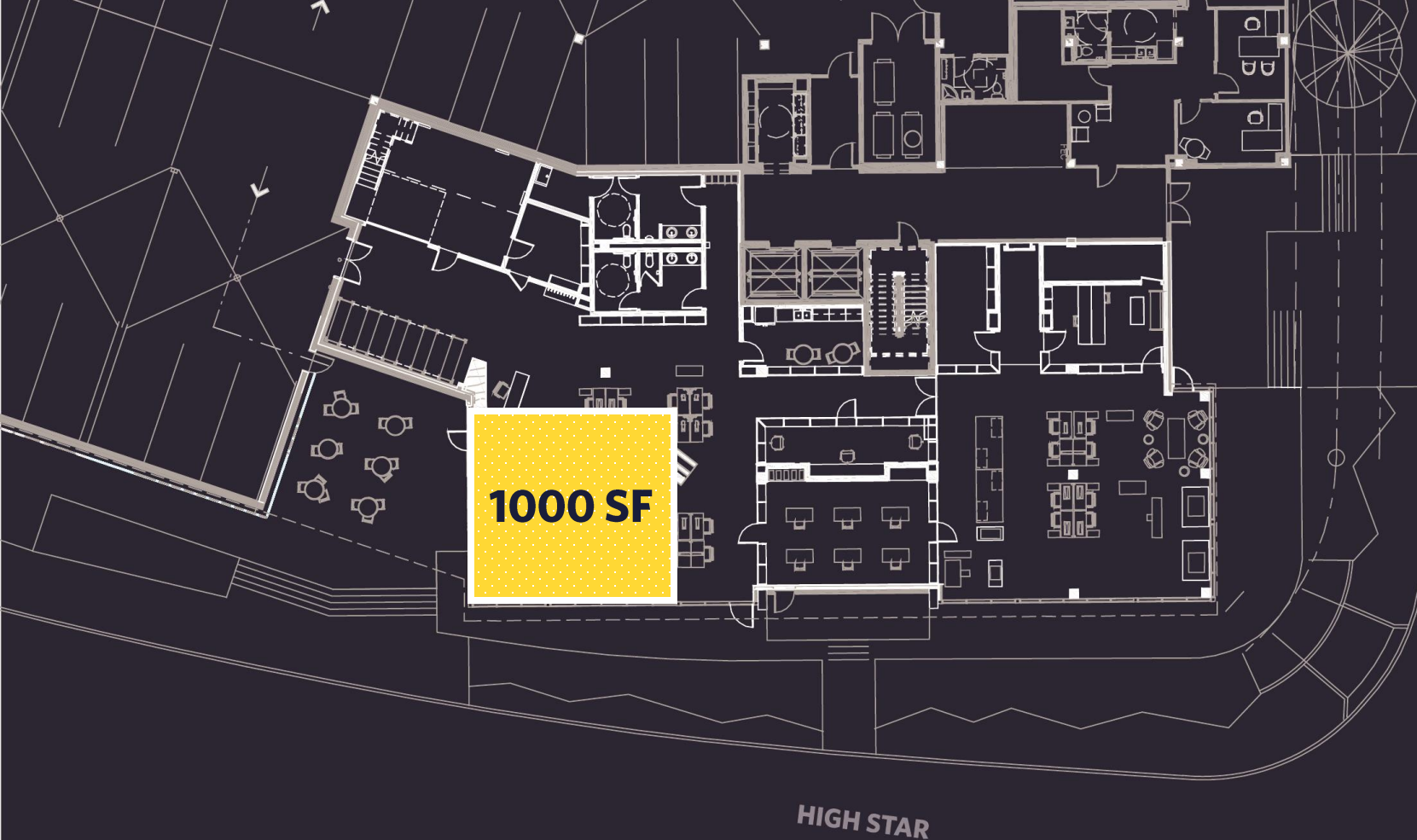


**1**  
**HEAT PRESS**



**1**  
**BUTTONHOLER**

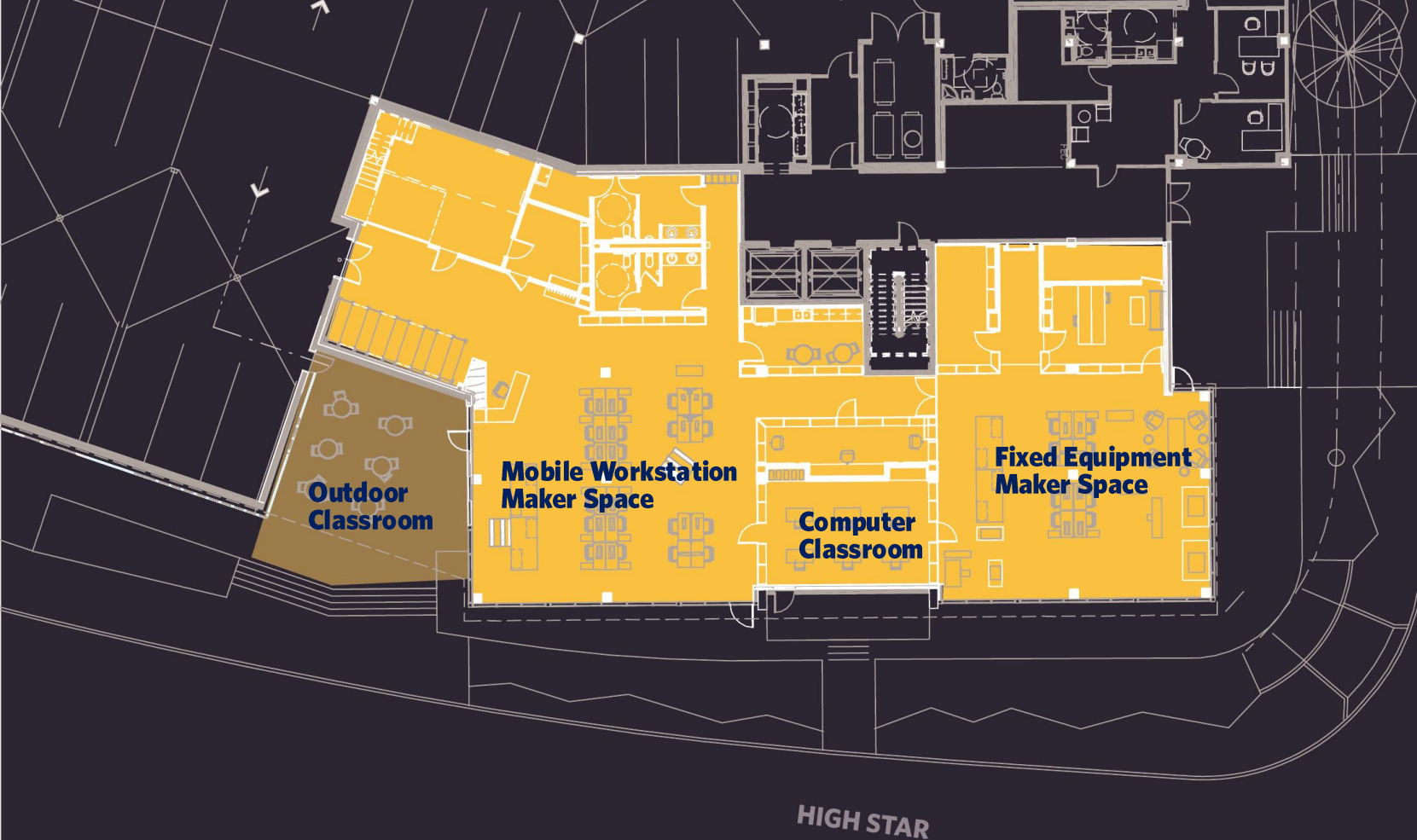




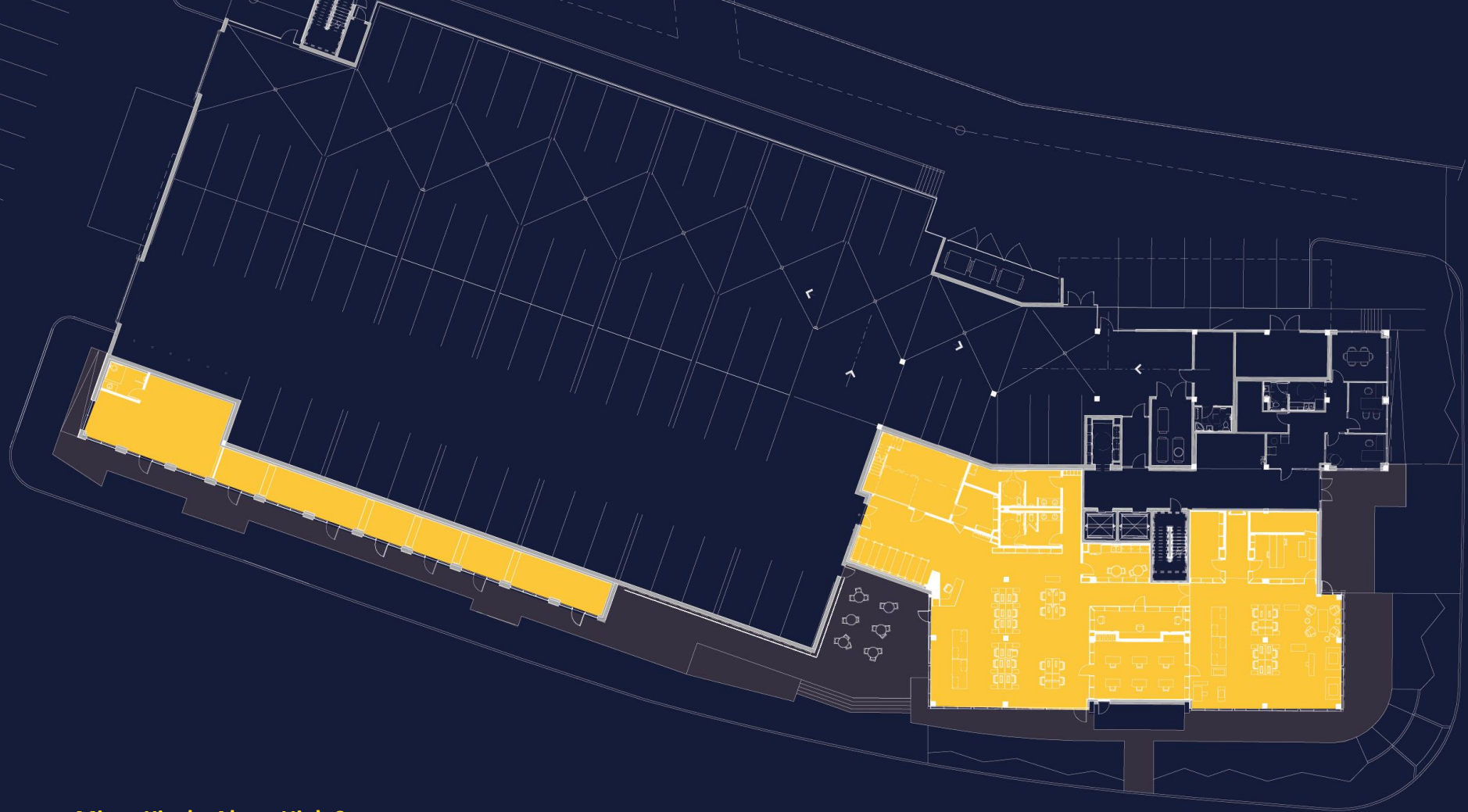
**1000 SF**

**We could do more with visible dedicated spaces for production and education.**



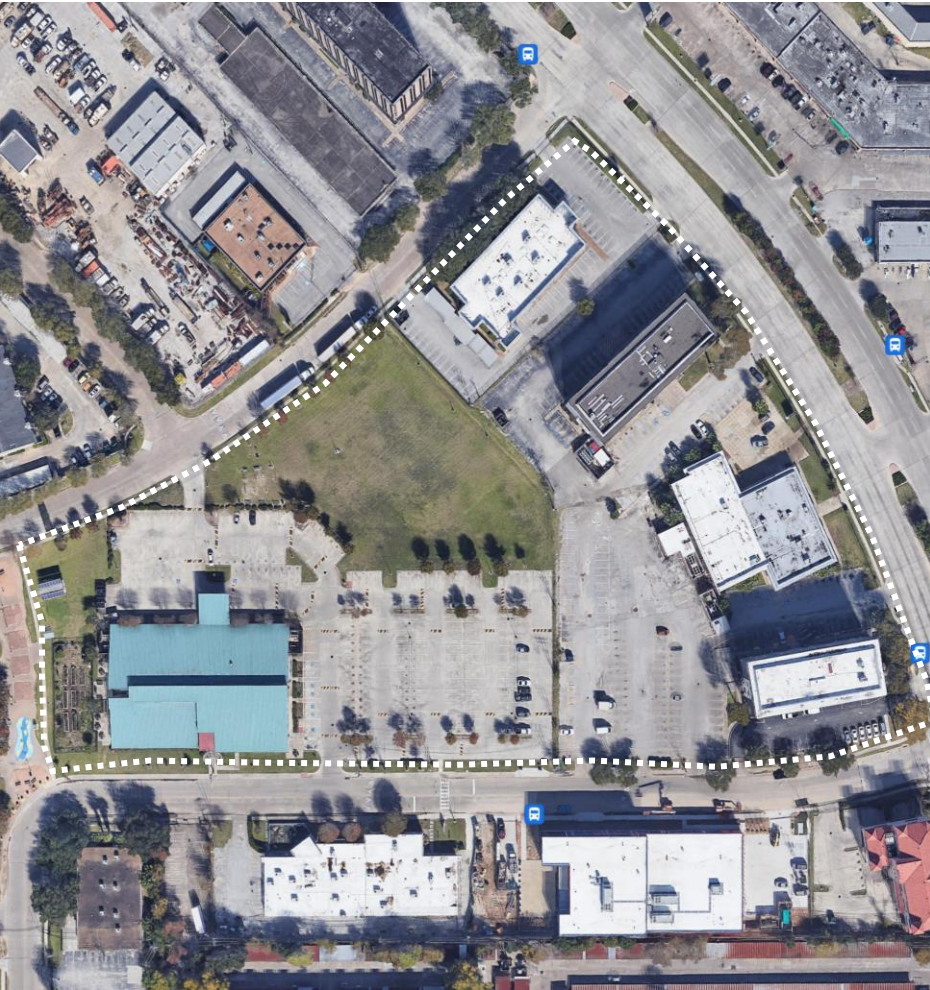


A functioning textile ecosystem



Micro-Kiosks Along High Star





**PRESENT**



**FUTURE**









**View towards Garage Court – Game Night**



**View of 'Sky Field' - Top Garage Deck During Work Hours**





**View/Use of 'Sky Field' - Top Garage Deck During Off-Hours**



**Multi-Use Space – Garage Court at Ground Floor**



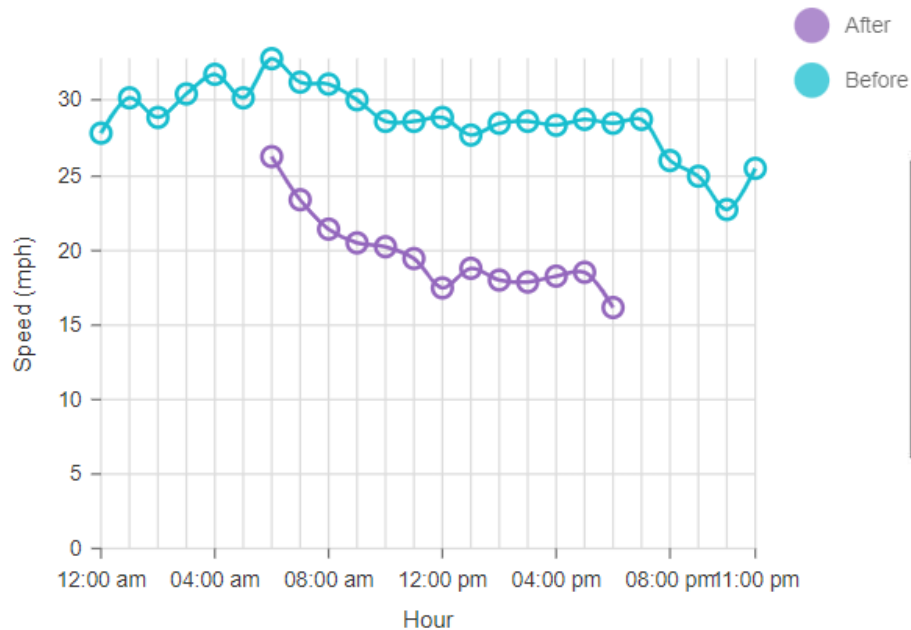
An aerial architectural rendering of a city block in Houston. A large, irregularly shaped green park area is outlined by a thick, dashed white line. The park features a large, curved wooden trellis structure in the upper left, a winding path with orange-brown borders, and several trees. To the left of the park is a modern building with a blue glass facade. To the right is a building with a brown, textured facade. In the foreground, there is a paved area with many small tables and chairs, suggesting an outdoor cafe or seating area. The background shows a parking lot with several cars and more trees.

**Approx. a Downtown Houston City Block  
Of shaded connective greenspace**

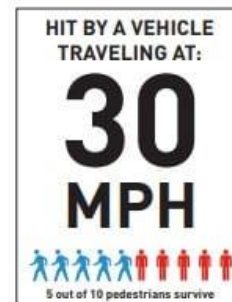
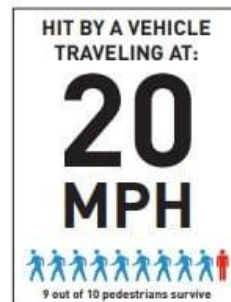


**Greenspace that connects people, partnership and human potential**



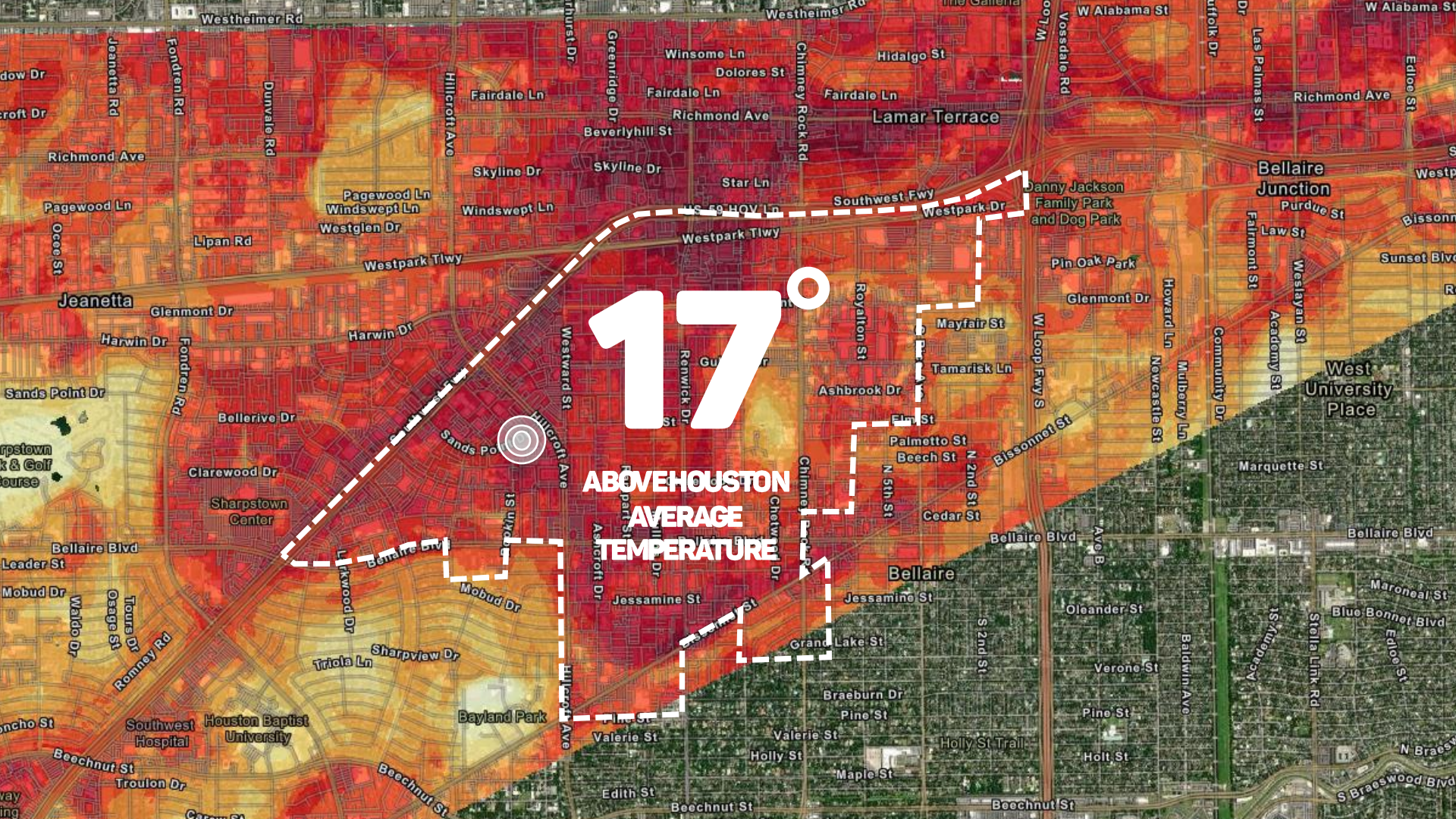


**VEHICLE SPEEDS – HILLCROFT AT  
DASHWOOD**



**SURVIVAL RATE AT DIFFERENT SPEEDS**





17°

ABOVE HOUSTON  
AVERAGE  
TEMPERATURE



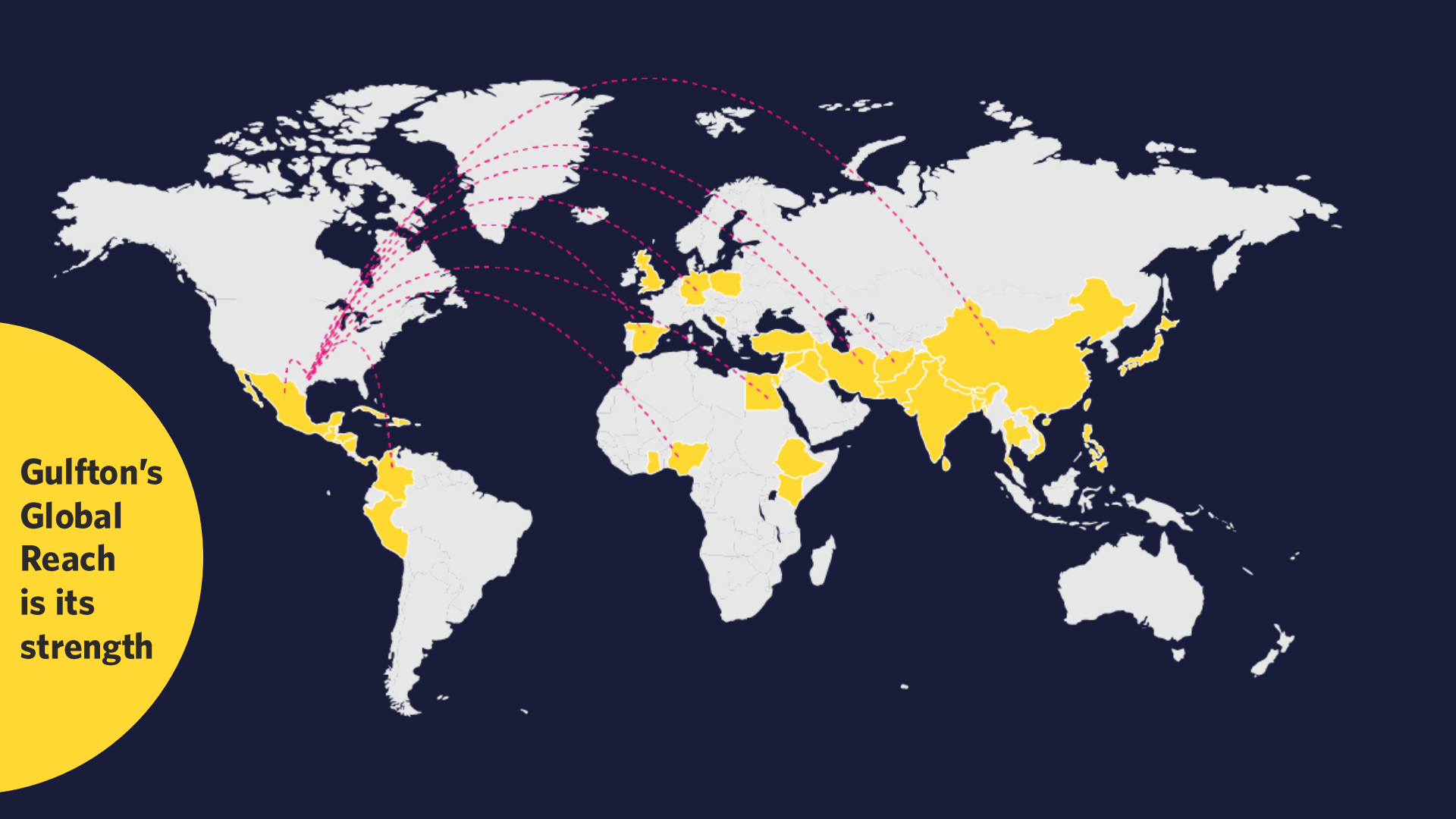


## Houston is a Can-Do City

INTERNATIONAL FABRIC  
HOUSTON SHIP CHANNEL  
MADE FROM PARTNERSHIPS



INTERNATIONAL STORIES  
CHEF HUGO ORTEGA



**Gulfton's  
Global  
Reach  
is its  
strength**

Think of all we  
can do, together.

